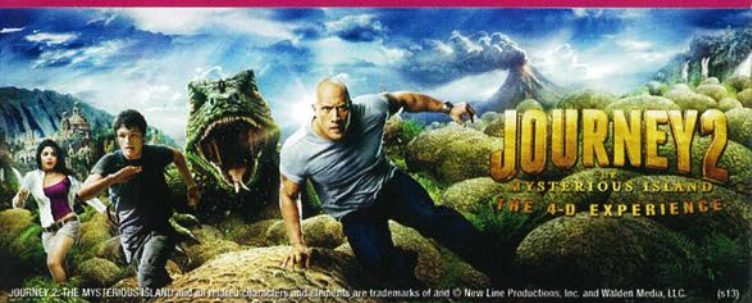


# Sentosa Twilight



**FREQUENCY\*** DAILY

**PICK-UP TIME** 1330

**TOUR STARTS** 1400

**RATES**

**Adult**

**Child**

**PER PAX**

\$S105 \$S82

**DURATION**

7.5 Hrs

- Tour Operates with a minimum of 2 adults.
- SSH coupon holders entitled discount: Adult \$S11, Child \$S8.

## Highlights

- **Cable Car Ride** • **Journey 2: The Mysterious Island, a 4-D Experience\*** • **S.E.A. Aquarium** • **Wings of Time** • **Sky Tower**
- **Merlion** • **Luge\*** • **Skyride**•

Board the cable car from Mt. Faber to Sentosa. Upon arrival, visit Sentosa 4D AdventureLand for an immersive 4D movie experience, Journey 2: The Mysterious Island where you become part of the show through a synchronisation of 3-D imaging and many more special effects. Discover the awe-inspiring world of life in the ocean at the world's largest aquarium at Resort World Sentosa Singapore. Step into S.E.A Aquarium and immerse yourself in a magical marine world seen through our planet's largest window to the ocean.

Fear of Heights? Standing at a height of 131 meters, the Sky Tower will allow you to enjoy a breathtaking 360° view of the island. The Sentosa Merlion is Singapore's biggest one so be sure not to miss the roof gallery right at the top. Enjoy a skyride and skid down the hills with the Luge, the first and only part go-cart, part-toboggan ride in Southeast Asia and expect an adrenalin rush to your senses. The Wings of Time is a musical extravaganza complimented with dazzling display of laser and lights. It's a showcase not to be missed!



[Click here to Submit Enquiry](#)

(LX-210117)

\* Min. height for Journey 2 is 90cm.

\* Min. height for Sentosa Luge is 110cm & Sentosa Skyride is 85cm.

JOURNEY 2: THE MYSTERIOUS ISLAND and all related characters and elements are trademarks of and © New Line Productions, Inc. and Walden Media, LLC. (s15)