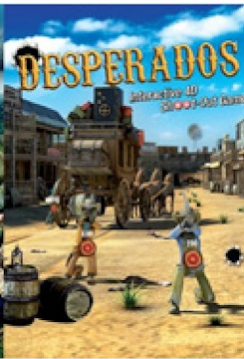
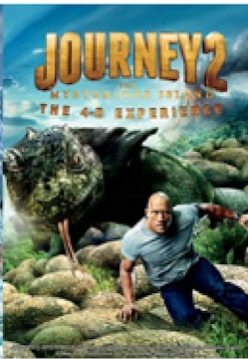
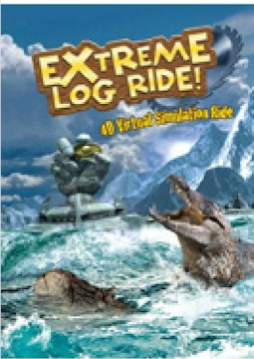


Sentosa Tranquility



FREQUENCY*	DAILY	RATES	Adult	Child
PICK-UP TIME	1100	PER PAX	\$S150	\$S100
TOUR STARTS	1130	DURATION	10 HRS	

- Tour Operates with a minimum of 4 adults.
- Inclusive of a choice of one of the following: complimentary beer, digiphoto photoshoot or hotdog with soda set.
- SSH coupon holders entitled discount: Adult \$S11, Child \$S8.

Highlights

- Cable Car Ride • 4D AdventureLand* • Butterfly Park • Merlion • Underwater World • Sky Ride* • Luge* • Sky Tower • Taste of Asia • Wings of Time

Board the cable car from MT.Faber and step in on an enchanting voyage right into the ocean's depths. Engage with majestic sharks and rays at Underwater World.

4D AdventureLand brings an immersive 4D movie, Journey 2: The Mysterious Island. Ride on a virtual 4D roller coaster "Extreme Log Ride" or grab a motion sensor pistol, aim and fire at Asia's First 4D Interactive Shoot-Out game.

Enter the world of butterflies and insects and look out for 3,000 species of the world's most attractive and rare insects. The Merlion is Singapore's national icon so be sure not to miss the roof gallery right at the top of the Sentosa Merlion. Standing at a height of 131 meters, the Sky Tower will allow you to enjoy a breathtaking 360° view of the island. Skid down the hills with the Luge, the first and only part go-cart, part-toboggan ride in SEA. The Wings of Time, a dazzling display of laser lights and fireworks will light up the sky. Last but not least, the tour ends with a Skyride in the coolness of the night.



[Click here to Submit Enquiry](#)

* Min. height for Sentosa Luge is 110cm & Sentosa Skyride is 85cm.

* Min. height for Journey 2 & Extreme Log Ride is 90cm. Desperado is 110cm.