

## 3 Days – Bay of Islands

Valid Till: 30 Sep 17



Rich in a unique history that ties both Maori and non - Maori people together and the first region of New Zealand, Northland is full of historical sites, stories and artefacts.

A visit to Northland is one of the best ways to experience 'real' New Zealand. Expect a slower pace and enjoy the opportunity to refresh, explore and interact with the locals.

Take your time in Northland be sure to allow plenty of time to explore the Northland region, it is vast and full of contrasts and scenic highlights. The people, history, culture and immense scenic beauty will have you wishing you had planned to stay longer no matter how many nights you have booked.

Package includes

2 nights accommodation in Paihia

Cape Brett 'Hole in the Rock' cruise is included - if you choose to finish the cruise in Russell. a ticket for the ferry back to Paihia is included also.

Return airport transfers are included - private transfer on arrival and shuttle transfer for departure.

You may add extra nights to this package or perhaps add a rental car to give you more freedom to explore this region.

Activities Included in this Package:

1. Hole in the Rock Cruise

**Seat in coach**

|        | Standard | Superior | First Class |
|--------|----------|----------|-------------|
| Single | \$1,094  | \$1,145  | \$1,173     |
| Double | \$809    | \$837    | \$851       |
| Triple | \$747    | \$774    | \$783       |

All prices are per person in New Zealand dollars.

# Accommodation Selections

We have carefully selected a range of preferred hotels in each region for all three categories offered, using the below 'star' ratings:

## Standard

Standard is equivalent to a good 3-star tourist hotel. These hotels represent excellent value for money and usually have a licensed restaurant and bar on the premises.

## Superior

Superior describes hotels in the 3½ to 4-star category. More often than not, these will be centrally located and offering a wide range of services and facilities.

## First Class

First Class are central city or resort location hotels at the top end of the scale rating 4 to 4½ stars. All hotels at this level have excellent facilities, bars and restaurants etc, full services, and many feature swimming pool, spa baths, and a fully equipped gymnasium for the enjoyment of guests.

All accommodation is subject to availability at the time of booking. We will endeavour to provide accommodation of a similar standard as requested in the event your choice is not available. However as the choice of accommodation is limited in remote areas, we will use the next best available option for you.

Rooms with a seaview/lakeview or suite rooms attract supplements - please ask our consultant for assistance.

*Why not spend an extra day or two to relax and unwind?*

All our Package Touring itineraries can have additional nights added anywhere you like.



Auckland City Hotel



Heartland Hotel Cotswold, Christchurch



Punakaiki Rocks Hotel



Hermitage Hotel Mt Cook

## Standard

|                       |                             |                              |
|-----------------------|-----------------------------|------------------------------|
| NORTH ISLAND          | <b>Bay of Islands</b>       | Tanoa Hotel Paihia           |
|                       | <b>Auckland</b>             | Auckland City Hotel          |
|                       |                             | Scenic Hotel Auckland        |
|                       | <b>Rotorua</b>              | Sudima Hotel                 |
|                       |                             | Ibis Rotorua                 |
|                       | <b>Coromandel</b>           | Aotearoa Lodge               |
|                       | <b>Taupo</b>                | Lakeland Resort              |
|                       | <b>Tauranga</b>             | Hotel Armitage               |
|                       | <b>Napier</b>               | Scenic Hotel Te Pania        |
|                       | <b>National Park</b>        | Skotel                       |
| <b>Wellington</b>     | West Plaza                  |                              |
| SOUTH ISLAND          | <b>Nelson</b>               | Grand Mercure Nelson Monaco  |
|                       | <b>Blenheim</b>             | Scenic Hotel Marlborough     |
|                       | <b>Greymouth</b>            | Kingsgate Hotel Greymouth    |
|                       | <b>Kaikoura</b>             | Kaikoura Gateway Motor Lodge |
|                       | <b>Punakaiki</b>            | Punakaiki Resort             |
|                       | <b>Christchurch</b>         | The Ashley Hotel             |
|                       |                             | Heartland Hotel Cotswold     |
|                       | <b>Mt Cook</b>              | Hermitage Hotel              |
|                       | <b>Queenstown</b>           | Heartland Hotel Queenstown   |
|                       |                             | Goldridge Resort             |
| <b>Wanaka</b>         | Wyndham Vacation Resorts    |                              |
| <b>Te Anau</b>        | Village Inn                 |                              |
| <b>Dunedin</b>        | Victoria Hotel              |                              |
| <b>Glacier Region</b> | Heartland Hotel Fox Glacier |                              |
| <b>Invercargill</b>   | Ascot Park Hotel            |                              |
| <b>Stewart Island</b> | Bay Motel                   |                              |



Scenic Hotel Auckland



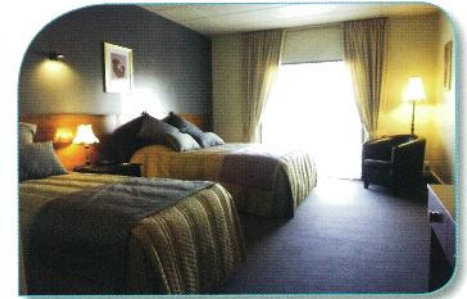
Scenic Hotel Marlborough, Blenheim



Sudima Hotel, Rotorua



Heartland Hotel Fox Glacier



Victoria Hotel, Dunedin





Rydges, Auckland



Distinction Rotorua



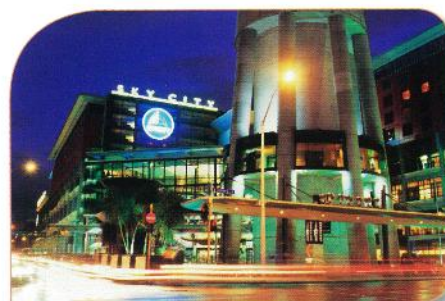
Scenic Hotel Dunedin City



Millennium Hotel, Rotorua



Hermitage Hotel Mt Cook (premium room)



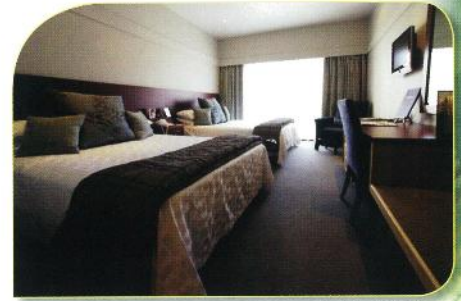
Sky City Hotel, Auckland

## Superior

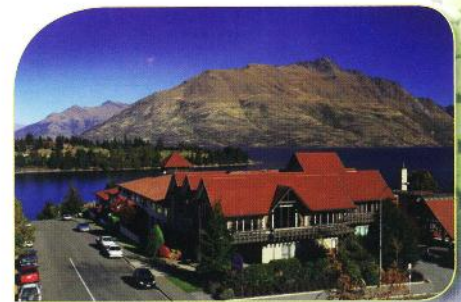
|                       |                                   |                                   |
|-----------------------|-----------------------------------|-----------------------------------|
| <b>NORTH ISLAND</b>   | <b>Bay of Islands</b>             | Scenic Hotel Bay of Islands       |
|                       | <b>Auckland</b>                   | Heritage Auckland                 |
|                       |                                   | Rydges Auckland Hotel             |
|                       | <b>Rotorua</b>                    | Holiday Inn Rotorua               |
|                       |                                   | Distinction Rotorua               |
|                       | <b>Coromandel</b>                 | Pacific Harbour Lodge             |
|                       | <b>Taupo</b>                      | Wairakei Resort Taupo             |
|                       | <b>Tauranga</b>                   | Trinity Wharf Tauranga            |
|                       | <b>Napier</b>                     | Scenic Hotel Te Pania             |
|                       | <b>National Park</b>              | Chateau Tongariro Hotel           |
| <b>Wellington</b>     | James Cook Grand Chancellor Hotel |                                   |
| <b>Nelson</b>         | Trailways Hotel                   |                                   |
| <b>SOUTH ISLAND</b>   | <b>Blenheim</b>                   | Chateau Marlborough               |
|                       | <b>Greymouth</b>                  | Kingsgate Hotel Greymouth         |
|                       | <b>Kaikoura</b>                   | The White Morph                   |
|                       | <b>Punakaiki</b>                  | Punakaiki Resort                  |
|                       | <b>Christchurch</b>               | Chateau on the Park               |
|                       |                                   | Sudima Hotel Christchurch Airport |
|                       | <b>Mt Cook</b>                    | Hermitage Hotel                   |
|                       | <b>Queenstown</b>                 | Copthorne Hotels                  |
|                       |                                   | Rydges Queenstown                 |
|                       | <b>Wanaka</b>                     | Grand Mercure Oakridge Resort     |
| <b>Te Anau</b>        | Distinction Luxmore Hotel         |                                   |
| <b>Dunedin</b>        | Scenic Hotel Dunedin City         |                                   |
| <b>Glacier Region</b> | Scenic Hotel Franz Josef Glacier  |                                   |
| <b>Invercargill</b>   | Ascot Park Hotel                  |                                   |
| <b>Stewart Island</b> | Bay Motel                         |                                   |



Heritage Hotel, Auckland



James Cook Grand Chancellor Hotel, Wellington



Copthorne Resort Lakefront, Queenstown

## First Class

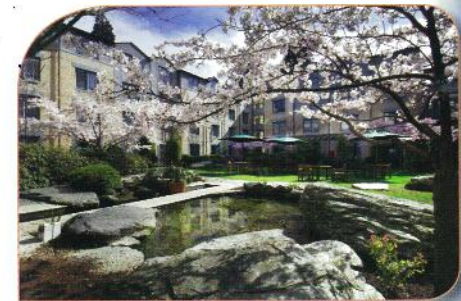
|                       |                                      |                             |
|-----------------------|--------------------------------------|-----------------------------|
| <b>NORTH ISLAND</b>   | <b>Bay of Islands</b>                | Copthorne Bay of Islands    |
|                       | <b>Auckland</b>                      | Sky City Hotel              |
|                       |                                      | Rendezvous Hotel Auckland   |
|                       | <b>Rotorua</b>                       | Millennium Rotorua          |
|                       |                                      | Novotel Rotorua Lakeside    |
|                       | <b>Coromandel</b>                    | Pacific Harbour Lodge       |
|                       | <b>Taupo</b>                         | Millennium Manuels Taupo    |
|                       | <b>Tauranga</b>                      | Trinity Wharf Tauranga      |
|                       | <b>Napier</b>                        | The Crown Hotel             |
|                       | <b>National Park</b>                 | Chateau Tongariro Hotel     |
| <b>Wellington</b>     | Copthorne Hotel Oriental Parade      |                             |
| <b>SOUTH ISLAND</b>   | <b>Nelson</b>                        | Rutherford Hotel Nelson     |
|                       | <b>Blenheim</b>                      | Chateau Marlborough         |
|                       | <b>Greymouth</b>                     | Kingsgate Hotel Greymouth   |
|                       | <b>Kaikoura</b>                      | The White Morph             |
|                       | <b>Punakaiki</b>                     | Punakaiki Resort            |
|                       | <b>Christchurch</b>                  | Novotel Cathedral Square    |
|                       |                                      | Rendezvous Hotel            |
|                       | <b>Mt Cook</b>                       | Hermitage Hotel             |
|                       | <b>Queenstown</b>                    | Millennium Queenstown       |
|                       |                                      | Novotel Queenstown Lakeside |
| <b>Wanaka</b>         | Edgewater Resort                     |                             |
| <b>Te Anau</b>        | Distinction Te Anau Hotel and Villas |                             |
| <b>Dunedin</b>        | Scenic Hotel Southern Cross          |                             |
| <b>Glacier Region</b> | Distinction Fox Glacier Hotel        |                             |
| <b>Invercargill</b>   | Ascot Park Hotel                     |                             |
| <b>Stewart Island</b> | Stewart Island Lodge                 |                             |



Novotel Queenstown



Scenic Hotel Southern Cross, Dunedin



Millennium Queenstown

[Click here to Submit Enquiry](#)

(GT-310517)