

# 12 Days New Charming New Zealand

Valid Till: 30 Sep 17

Includes

Auckland



## DAY 1 - ARRIVE AUCKLAND

On arrival in Auckland, 'The City of Sails', seat in coach passengers will be met by our local representative and privately transferred to your hotel. Self drive clients will collect your rental car at the airport and drive to your hotel.

## DAY 2 - AUCKLAND - WAITOMO - ROTORUA

Travel south through the Waikato region to arrive at Waitomo for a guided tour of the glowworm caves. Continue to Rotorua this afternoon via Hobbiton Movie Set for a guided tour of this world-class attraction. (B)

## DAY 3 - ROTORUA

Visit Te Puia Thermal Reserve, Agrodome Farm Show and Rainbow Springs to view trout and wildlife. This afternoon is at leisure. (B)

## DAY 4 - ROTORUA - WELLINGTON

Travel from Rotorua to Lake Taupo before heading south through the Central Plateau to Wellington, New Zealand's capital city. (B)

## DAY 5 - WELLINGTON

Enjoy a morning sightseeing tour of Wellington and a short guided tour of Te Papa (the 'Museum of New Zealand') before enjoying a free afternoon to explore New Zealand's capital city. (B)

## DAY 6 - WELLINGTON - CHRISTCHURCH

Journey across Cook Strait, which separates the North and South Islands of New Zealand and into the Marlborough Sounds with its sparkling clear waters and lush forests, before arriving in Picton. Travel south through Blenheim and Kaikoura to reach the 'Garden City' of Christchurch. (B)

#### **DAY 7 - CHRISTCHURCH - DUNEDIN**

Travel south across the Canterbury Plains to reach Scottish influenced Dunedin, renowned for the local wildlife and Otago University. (B)

#### **DAY 8 - DUNEDIN - QUEENSTOWN**

This morning is free for optional activities. Departing Dunedin this afternoon, travel inland through the Central Otago towns of Lawrence and Clyde before arriving in Cromwell. Continue through the Kawarau Gorge to arrive in Queenstown in the early evening. (B)

#### **DAY 9 - QUEENSTOWN**

A free day to explore the endless optional attractions available. Queenstown offers bungy jumping, jetboating, white water rafting, gondola rides and much more. Optional activities not included in the tour price. (B)

#### **DAY 10 - QUEENSTOWN - GLACIER REGION**

Depart Queenstown and travel via Lake Wanaka and through the historic Haast Pass, gateway to the World Heritage Westland National Park. Continue up the West Coast past spectacular mountain ranges, native forests and lakes to the glacier region of Franz Josef and Fox Glaciers. For Self Drive clients, entry to the Glacier Hot Pools is included. (B)

#### **DAY 11 - GLACIER REGION - GREYMOUTH - CHRISTCHURCH**

Travel north to Greymouth and board the world famous Tranz Alpine train (seat in coach passengers only). Ascend through lush beech forests past the alpine village of Arthur's Pass before crossing the spectacular Southern Alps. Travel over Canterbury Plains to Christchurch. (B)

#### **DAY 12 - DEPARTURE DAY**

Your arrangements conclude today with a departure transfer or the return of your rental car

#### **Package Touring offers the following:**

Daily departures

No minimum number of passengers

Breakfasts Daily at all hotels

All sightseeing entry fees included (as mentioned in each itinerary)

A choice of three accommodation options

A choice of three transport options

All tours can be added to

All packages can be taken in reverse (except 'Stunning New Zealand')

#### Activities Included in this Package:

1. Wellington City Sighseeing
2. Interislander Ferry from Wellington
3. Te Puia – Maori Culture
4. Milford Day Tour Ex Queenstown
5. Te Papa – Museum of New Zealand
6. Agrodome

7. Hobbiton Movie Set Tours
8. Waitomo Glowworm Caves
9. TranzAlpine Train
10. Rainbow Springs Kiwi Wildlife Park

Transportation:

Rental Cars

Seat in Coach

Private Touring

**Seat in coach**

	Standard	Superior	First Class
Single	\$4,324	\$4,792	\$5,115
Double	\$3,118	\$3,374	\$3,553
Triple	\$2,938	\$3,160	\$3,297

**Self Drive**

**- CDAR Compact**

Pax	Standard Hotel			Superior Hotel			First Class Hotel		
	Single	Twin	Triple	Single	Twin	Triple	Single	Twin	Triple
1	\$3,691			\$4,159			\$4,481		
2	\$3,329	\$2,219		\$3,797	\$2,474		\$4,119	\$2,653	
3	\$3,208	\$2,098	\$1,917	\$3,676	\$2,354	\$2,140	\$3,999	\$2,532	\$2,277

**Self Drive**

**- IDAR Intermediate**

Pax	Standard Hotel			Superior Hotel			First Class Hotel		
	Single	Twin	Triple	Single	Twin	Triple	Single	Twin	Triple
1	\$3,706			\$4,174			\$4,497		
2	\$3,337	\$2,227		\$3,804	\$2,482		\$4,127	\$2,661	
3	\$3,213	\$2,103	\$1,923	\$3,681	\$2,359	\$2,145	\$4,004	\$2,538	\$2,282
4	\$3,152	\$2,042	\$1,861	\$3,620	\$2,297	\$2,083	\$3,942	\$2,476	\$2,220

**Self Drive**

**- FDAR Full Size**

Pax	Standard Hotel			Superior Hotel			First Class Hotel		
	Single	Twin	Triple	Single	Twin	Triple	Single	Twin	Triple
1	\$3,753			\$4,220			\$4,543		
2	\$3,360	\$2,250		\$3,828	\$2,505		\$4,150	\$2,684	
3	\$3,229	\$2,119	\$1,938	\$3,697	\$2,374	\$2,160	\$4,019	\$2,553	\$2,297
4	\$3,163	\$2,053	\$1,872	\$3,631	\$2,309	\$2,095	\$3,954	\$2,488	\$2,232

**Self Drive**

**- PVAR Premium 8 Sea**

Pax	Standard Hotel			Superior Hotel			First Class Hotel		
	Single	Twin	Triple	Single	Twin	Triple	Single	Twin	Triple
4	\$3,259	\$2,149	\$1,969	\$3,727	\$2,405	\$2,191	\$4,050	\$2,584	\$2,328
5	\$3,201	\$2,091	\$1,910	\$3,669	\$2,346	\$2,132	\$3,991	\$2,525	\$2,269
6	\$3,162	\$2,052	\$1,871	\$3,630	\$2,307	\$2,093	\$3,952	\$2,486	\$2,230
7	\$3,134	\$2,024	\$1,843	\$3,602	\$2,279	\$2,065	\$3,924	\$2,458	\$2,203

All prices are per person in New Zealand dollars.

[View pricing calculator](#)



# Accommodation Selections

We have carefully selected a range of preferred hotels in each region for all three categories offered, using the below 'star' ratings:

## Standard

Standard is equivalent to a good 3-star tourist hotel. These hotels represent excellent value for money and usually have a licensed restaurant and bar on the premises.

## Superior

Superior describes hotels in the 3½ to 4-star category. More often than not, these will be centrally located and offering a wide range of services and facilities.

## First Class

First Class are central city or resort location hotels at the top end of the scale rating 4 to 4½ stars. All hotels at this level have excellent facilities, bars and restaurants etc, full services, and many feature swimming pool, spa baths, and a fully equipped gymnasium for the enjoyment of guests.

All accommodation is subject to availability at the time of booking. We will endeavour to provide accommodation of a similar standard as requested in the event your choice is not available. However as the choice of accommodation is limited in remote areas, we will use the next best available option for you.

Rooms with a seaview/lakeview or suite rooms attract supplements - please ask our consultant for assistance.

*Why not spend an extra day or two to relax and unwind?*

All our Package Touring itineraries can have additional nights added anywhere you like.



Auckland City Hotel



Heartland Hotel Cotswold, Christchurch



Punakaiki Rocks Hotel



Hermitage Hotel Mt Cook

## Standard

NORTH ISLAND	<b>Bay of Islands</b>	Tanoa Hotel Paihia
	<b>Auckland</b>	Auckland City Hotel
		Scenic Hotel Auckland
	<b>Rotorua</b>	Sudima Hotel
		Ibis Rotorua
	<b>Coromandel</b>	Aotearoa Lodge
	<b>Taupo</b>	Lakeland Resort
	<b>Tauranga</b>	Hotel Armitage
	<b>Napier</b>	Scenic Hotel Te Pania
	<b>National Park</b>	Skotel
<b>Wellington</b>	West Plaza	
SOUTH ISLAND	<b>Nelson</b>	Grand Mercure Nelson Monaco
	<b>Blenheim</b>	Scenic Hotel Marlborough
	<b>Greymouth</b>	Kingsgate Hotel Greymouth
	<b>Kaikoura</b>	Kaikoura Gateway Motor Lodge
	<b>Punakaiki</b>	Punakaiki Resort
	<b>Christchurch</b>	The Ashley Hotel
		Heartland Hotel Cotswold
	<b>Mt Cook</b>	Hermitage Hotel
	<b>Queenstown</b>	Heartland Hotel Queenstown
		Goldridge Resort
<b>Wanaka</b>	Wyndham Vacation Resorts	
<b>Te Anau</b>	Village Inn	
<b>Dunedin</b>	Victoria Hotel	
<b>Glacier Region</b>	Heartland Hotel Fox Glacier	
<b>Invercargill</b>	Ascot Park Hotel	
<b>Stewart Island</b>	Bay Motel	



Scenic Hotel Auckland



Scenic Hotel Marlborough, Blenheim



Sudima Hotel, Rotorua



Heartland Hotel Fox Glacier



Victoria Hotel, Dunedin





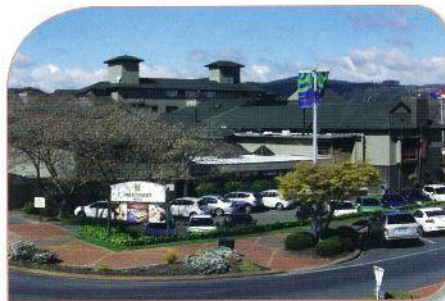
Rydges, Auckland



Distinction Rotorua



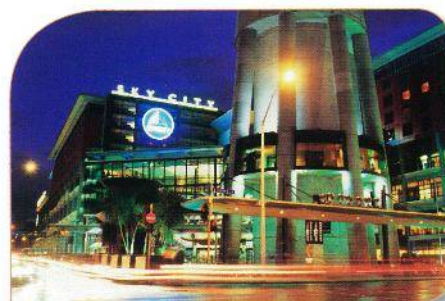
Scenic Hotel Dunedin City



Millennium Hotel, Rotorua



Hermitage Hotel Mt Cook (premium room)



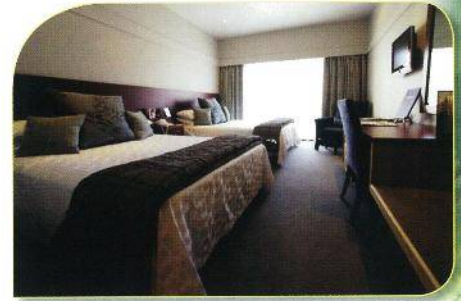
Sky City Hotel, Auckland

## Superior

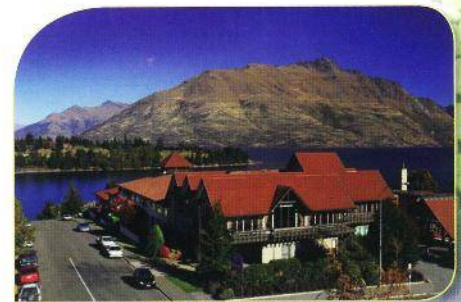
NORTH ISLAND	<b>Bay of Islands</b>	Scenic Hotel Bay of Islands
	<b>Auckland</b>	Heritage Auckland
		Rydges Auckland Hotel
	<b>Rotorua</b>	Holiday Inn Rotorua
		Distinction Rotorua
	<b>Coromandel</b>	Pacific Harbour Lodge
	<b>Taupo</b>	Wairakei Resort Taupo
	<b>Tauranga</b>	Trinity Wharf Tauranga
	<b>Napier</b>	Scenic Hotel Te Pania
	<b>National Park</b>	Chateau Tongariro Hotel
<b>Wellington</b>	James Cook Grand Chancellor Hotel	
<b>Nelson</b>	Trailways Hotel	
<b>Blenheim</b>	Chateau Marlborough	
<b>Greymouth</b>	Kingsgate Hotel Greymouth	
<b>Kaikoura</b>	The White Morph	
<b>Punakaiki</b>	Punakaiki Resort	
SOUTH ISLAND	<b>Christchurch</b>	Chateau on the Park
		Sudima Hotel Christchurch Airport
	<b>Mt Cook</b>	Hermitage Hotel
	<b>Queenstown</b>	Copthorne Hotels
		Rydges Queenstown
	<b>Wanaka</b>	Grand Mercure Oakridge Resort
	<b>Te Anau</b>	Distinction Luxmore Hotel
	<b>Dunedin</b>	Scenic Hotel Dunedin City
	<b>Glacier Region</b>	Scenic Hotel Franz Josef Glacier
	<b>Invercargill</b>	Ascot Park Hotel
<b>Stewart Island</b>	Bay Motel	



Heritage Hotel, Auckland



James Cook Grand Chancellor Hotel, Wellington



Copthorne Resort Lakefront, Queenstown

## First Class

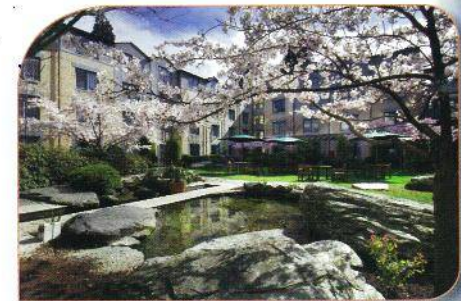
NORTH ISLAND	<b>Bay of Islands</b>	Copthorne Bay of Islands
	<b>Auckland</b>	Sky City Hotel
		Rendezvous Hotel Auckland
	<b>Rotorua</b>	Millennium Rotorua
		Novotel Rotorua Lakeside
	<b>Coromandel</b>	Pacific Harbour Lodge
	<b>Taupo</b>	Millennium Manuels Taupo
	<b>Tauranga</b>	Trinity Wharf Tauranga
	<b>Napier</b>	The Crown Hotel
	<b>National Park</b>	Chateau Tongariro Hotel
<b>Wellington</b>	Copthorne Hotel Oriental Parade	
<b>Nelson</b>	Rutherford Hotel Nelson	
<b>Blenheim</b>	Chateau Marlborough	
<b>Greymouth</b>	Kingsgate Hotel Greymouth	
<b>Kaikoura</b>	The White Morph	
<b>Punakaiki</b>	Punakaiki Resort	
SOUTH ISLAND	<b>Christchurch</b>	Novotel Cathedral Square
		Rendezvous Hotel
	<b>Mt Cook</b>	Hermitage Hotel
	<b>Queenstown</b>	Millennium Queenstown
		Novotel Queenstown Lakeside
	<b>Wanaka</b>	Edgewater Resort
	<b>Te Anau</b>	Distinction Te Anau Hotel and Villas
	<b>Dunedin</b>	Scenic Hotel Southern Cross
	<b>Glacier Region</b>	Distinction Fox Glacier Hotel
	<b>Invercargill</b>	Ascot Park Hotel
<b>Stewart Island</b>	Stewart Island Lodge	



Novotel Queenstown



Scenic Hotel Southern Cross, Dunedin



Millennium Queenstown

[Click here to Submit Enquiry](#)

(GT-310517)