

# 15 Days Best of New Zealand

Valid Till: 30 Sep 17

Includes

Auckland



## DAY 1 - ARRIVE AUCKLAND

On arrival in Auckland, 'The City of Sails', seat in coach passengers will be met by our local representative and privately transferred to your hotel. Self drive clients will collect your rental car at the airport and drive to your hotel.

## DAY 2 - AUCKLAND

Enjoy a morning sightseeing tour of Auckland city including a visit to Kelly Tarlton's Sealife Aquarium and Antarctic Encounter. The remainder of the day is free. (B)

## DAY 3 - AUCKLAND - WAITOMO - ROTORUA

Travel south through the fertile Waikato region to arrive at Waitomo. Enjoy a guided tour of the Waitomo Glowworm Caves. On completion continue over the Mamaku Ranges to reach the 'Thermal City' of Rotorua. (B)

## DAY 4 - ROTORUA

Visit Te Puia Thermal Reserve to see boiling mudpools and roaring geysers. Following this, visit Rainbow Springs to see New Zealand's trout, birds and wildlife before continuing to the Agrodome for a New Zealand farm show featuring sheep dog demonstrations, cow milking and an introduction to the stars of our sheep industry. The afternoon is at leisure. This evening enjoy an authentic Maori Hangi (feast) and Concert. (B,D)

## **DAY 5 - ROTORUA - WELLINGTON**

Travel south to reach the popular lake resort of Taupo before continuing on the Desert Road, dominated in the background by the three peaks of Ruapehu, Ngauruhoe and Tongariro. Continue south through farmland before arriving in the 'Capital City' of Wellington (B)

## **DAY 6 - WELLINGTON**

Enjoy a morning sightseeing tour of Wellington and a short guided tour of Te Papa (the 'Museum of New Zealand') before enjoying a free afternoon to explore New Zealand's capital city. (B)

## **DAY 7 - WELLINGTON - PICTON - KAIKOURA**

Journey across Cook Strait and into the Marlborough Sounds before arriving in Picton. Travel south through the town of Blenheim, before reaching Kaikoura – here you might like to take an optional whalewatch cruise or scenic flight (optional activities not included in the tour price). (B)

## **DAY 8 - KAIKOURA - CHRISTCHURCH**

Leave Kaikoura behind as you turn inland and travel through North Canterbury to reach the 'Garden City' of Christchurch. (B)

## **DAY 9 - CHRISTCHURCH - MT COOK - QUEENSTOWN**

Travel across the fertile Canterbury Plains to Lake Tekapo and the Church of the Good Shepherd before continuing on to New Zealand's highest mountain - Mt Cook. Depart Mt Cook and follow the shores of Lake Pukaki south through the historic Central Otago region to the 'Alpine Resort' of Queenstown. (B)

## **DAY 10 - MILFORD SOUND**

Follow the southern arm of Lake Wakatipu to Lumsden, and onward to Lake Te Anau. Enter the Eglinton Valley and travel through the Homer Tunnel to reach Milford Sound. Enjoy a cruise on this world famous fiord. Return to Queenstown. (B)

## **DAY 11 - QUEENSTOWN**

A free day to explore the endless optional attractions available. Queenstown offers bungy jumping, jetboating, gondola rides and much more. Optional activities not included in the tour price. (B)

## **DAY 12 - QUEENSTOWN - GLACIER REGION**

Depart Queenstown and travel via Lake Wanaka and through the historic Haast Pass, gateway to the World Heritage Westland National Park. Continue up the West Coast past spectacular mountain ranges, native forests and lakes to the glacier region of Franz Josef and Fox Glaciers. (B)

## **DAY 13 - GLACIER REGION**

A full day at leisure to explore this magnificent glacier region. Optional activities include a scenic flight or guided walk on one of the glaciers. Optional activities not included in the tour price. For Self Drive clients, entry to the Glacier Hot Pools is included. (B)

## **DAY 14 - GLACIER REGION - GREYMOUTH - CHRISTCHURCH**

Travel north to Greymouth and board the world famous Tranz Alpine train (seat in coach passengers only). Ascend through lush beech forests past the alpine village of Arthur's Pass before crossing the spectacular Southern Alps. Travel over Canterbury Plains to Christchurch. (B)

## **DAY 15 - DEPARTURE DAY**

Your arrangements conclude today with a departure transfer or the return of your rental car.

**Package Touring offers the following:**

Daily departures

No minimum number of passengers

Breakfasts Daily at all hotels

All sightseeing entry fees included (as mentioned in each itinerary)

A choice of three accommodation options

A choice of three transport options

All tours can be added to

All packages can be taken in reverse (except 'Stunning New Zealand')

Activities Included in this Package:

1. Auckland City Highlights
2. Kelly Tarltons SEA LIFE Aquarium
3. Agrodome
4. Tamaki Maori Village – Maori Culture
5. Wellington City Sightseeing
6. Milford Day Tour Ex Queenstown
7. Waitomo Glowworm Caves
8. TranzAlpine Train
9. Te Puia – Maori Culture
10. Te Papa – Museum of New Zealand
11. Rainbow Springs Kiwi Wildlife Park

Transportation:

Rental Cars

Seat in Coach

Private Touring

**Seat in coach**

	Standard	Superior	First Class
Single	\$5,594	\$6,127	\$6,576
Double	\$4,091	\$4,382	\$4,627
Triple	\$3,853	\$4,108	\$4,289

**Self Drive**

**- CDAR Compact**

Pax	Standard Hotel			Superior Hotel			First Class Hotel		
	Single	Twin	Triple	Single	Twin	Triple	Single	Twin	Triple
1	\$4,784			\$5,316			\$5,765		
2	\$4,339	\$2,894		\$4,871	\$3,185		\$5,320	\$3,430	
3	\$4,191	\$2,746	\$2,508	\$4,723	\$3,036	\$2,763	\$5,172	\$3,282	\$2,944

**Self Drive**

**- IDAR Intermediate**

Pax	Standard Hotel			Superior Hotel			First Class Hotel		
	Single	Twin	Triple	Single	Twin	Triple	Single	Twin	Triple
1	\$4,803			\$5,336			\$5,785		
2	\$4,349	\$2,904		\$4,881	\$3,195		\$5,330	\$3,440	
3	\$4,197	\$2,752	\$2,515	\$4,730	\$3,043	\$2,769	\$5,179	\$3,288	\$2,950
4	\$4,122	\$2,676	\$2,439	\$4,654	\$2,967	\$2,694	\$5,103	\$3,213	\$2,874

**Self Drive**

**- FDAR Full Size**

Pax	Standard Hotel			Superior Hotel			First Class Hotel		
	Single	Twin	Triple	Single	Twin	Triple	Single	Twin	Triple
1	\$4,921			\$5,453			\$5,902		
2	\$4,408	\$2,962		\$4,940	\$3,253		\$5,389	\$3,499	
3	\$4,236	\$2,791	\$2,554	\$4,769	\$3,082	\$2,809	\$5,218	\$3,328	\$2,989
4	\$4,151	\$2,706	\$2,468	\$4,683	\$2,997	\$2,723	\$5,132	\$3,242	\$2,904

**Self Drive**

**- PVAR Premium 8 Sea**

Pax	Standard Hotel			Superior Hotel			First Class Hotel		
	Single	Twin	Triple	Single	Twin	Triple	Single	Twin	Triple
4	\$4,238	\$2,792	\$2,555	\$4,770	\$3,083	\$2,810	\$5,219	\$3,329	\$2,990
5	\$4,169	\$2,724	\$2,486	\$4,701	\$3,015	\$2,741	\$5,150	\$3,260	\$2,922
6	\$4,123	\$2,678	\$2,440	\$4,656	\$2,969	\$2,696	\$5,105	\$3,214	\$2,876
7	\$4,090	\$2,645	\$2,408	\$4,623	\$2,936	\$2,663	\$5,072	\$3,181	\$2,843

All prices are per person in New Zealand dollars.

[View pricing calculator](#)

# Accommodation Selections

We have carefully selected a range of preferred hotels in each region for all three categories offered, using the below 'star' ratings:

## Standard

Standard is equivalent to a good 3-star tourist hotel. These hotels represent excellent value for money and usually have a licensed restaurant and bar on the premises.

## Superior

Superior describes hotels in the 3½ to 4-star category. More often than not, these will be centrally located and offering a wide range of services and facilities.

## First Class

First Class are central city or resort location hotels at the top end of the scale rating 4 to 4½ stars. All hotels at this level have excellent facilities, bars and restaurants etc, full services, and many feature swimming pool, spa baths, and a fully equipped gymnasium for the enjoyment of guests.

All accommodation is subject to availability at the time of booking. We will endeavour to provide accommodation of a similar standard as requested in the event your choice is not available. However as the choice of accommodation is limited in remote areas, we will use the next best available option for you.

Rooms with a seaview/lakeview or suite rooms attract supplements - please ask our consultant for assistance.

*Why not spend an extra day or two to relax and unwind?*

All our Package Touring itineraries can have additional nights added anywhere you like.



Auckland City Hotel



Heartland Hotel Cotswold, Christchurch



Punakaiki Rocks Hotel



Hermitage Hotel Mt Cook

## Standard

NORTH ISLAND	<b>Bay of Islands</b>	Tanoa Hotel Paihia
	<b>Auckland</b>	Auckland City Hotel
		Scenic Hotel Auckland
	<b>Rotorua</b>	Sudima Hotel
		Ibis Rotorua
	<b>Coromandel</b>	Aotearoa Lodge
	<b>Taupo</b>	Lakeland Resort
	<b>Tauranga</b>	Hotel Armitage
	<b>Napier</b>	Scenic Hotel Te Pania
	<b>National Park</b>	Skotel
<b>Wellington</b>	West Plaza	
SOUTH ISLAND	<b>Nelson</b>	Grand Mercure Nelson Monaco
	<b>Blenheim</b>	Scenic Hotel Marlborough
	<b>Greymouth</b>	Kingsgate Hotel Greymouth
	<b>Kaikoura</b>	Kaikoura Gateway Motor Lodge
	<b>Punakaiki</b>	Punakaiki Resort
	<b>Christchurch</b>	The Ashley Hotel
		Heartland Hotel Cotswold
	<b>Mt Cook</b>	Hermitage Hotel
	<b>Queenstown</b>	Heartland Hotel Queenstown
		Goldridge Resort
<b>Wanaka</b>	Wyndham Vacation Resorts	
<b>Te Anau</b>	Village Inn	
<b>Dunedin</b>	Victoria Hotel	
<b>Glacier Region</b>	Heartland Hotel Fox Glacier	
<b>Invercargill</b>	Ascot Park Hotel	
<b>Stewart Island</b>	Bay Motel	



Scenic Hotel Auckland



Scenic Hotel Marlborough, Blenheim



Sudima Hotel, Rotorua



Heartland Hotel Fox Glacier



Victoria Hotel, Dunedin



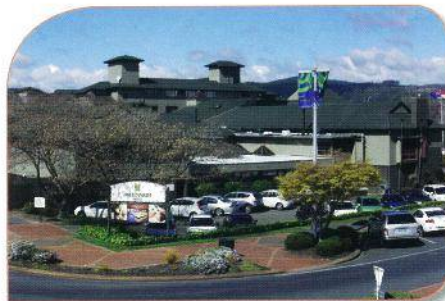
Rydges, Auckland



Distinction Rotorua



Scenic Hotel Dunedin City



Millennium Hotel, Rotorua



Hermitage Hotel Mt Cook (premium room)



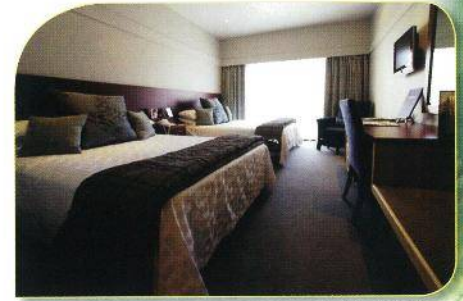
Sky City Hotel, Auckland

## Superior

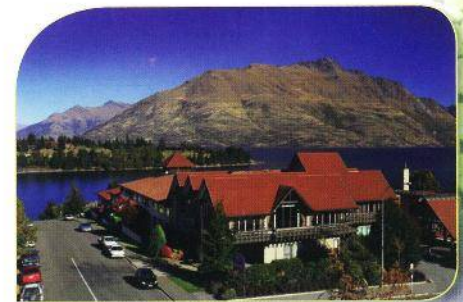
<b>NORTH ISLAND</b>	<b>Bay of Islands</b>	Scenic Hotel Bay of Islands
	<b>Auckland</b>	Heritage Auckland Rydges Auckland Hotel
	<b>Rotorua</b>	Holiday Inn Rotorua Distinction Rotorua
	<b>Coromandel</b>	Pacific Harbour Lodge
	<b>Taupo</b>	Wairakei Resort Taupo
	<b>Tauranga</b>	Trinity Wharf Tauranga
	<b>Napier</b>	Scenic Hotel Te Pania
	<b>National Park</b>	Chateau Tongariro Hotel
	<b>Wellington</b>	James Cook Grand Chancellor Hotel
	<b>Nelson</b>	Trailways Hotel
<b>SOUTH ISLAND</b>	<b>Blenheim</b>	Chateau Marlborough
	<b>Greymouth</b>	Kingsgate Hotel Greymouth
	<b>Kaikoura</b>	The White Morph
	<b>Punakaiki</b>	Punakaiki Resort
	<b>Christchurch</b>	Chateau on the Park Sudima Hotel Christchurch Airport
	<b>Mt Cook</b>	Hermitage Hotel
	<b>Queenstown</b>	Copthorne Hotels Rydges Queenstown
	<b>Wanaka</b>	Grand Mercure Oakridge Resort
	<b>Te Anau</b>	Distinction Luxmore Hotel
	<b>Dunedin</b>	Scenic Hotel Dunedin City
<b>Glacier Region</b>	Scenic Hotel Franz Josef Glacier	
<b>Invercargill</b>	Ascot Park Hotel	
<b>Stewart Island</b>	Bay Motel	



Heritage Hotel, Auckland



James Cook Grand Chancellor Hotel, Wellington



Copthorne Resort Lakefront, Queenstown

## First Class

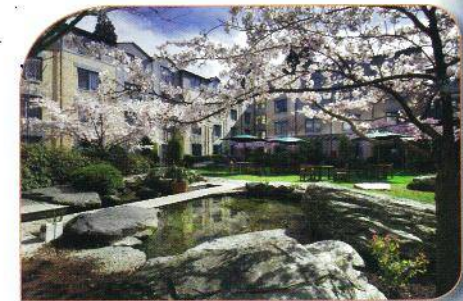
<b>NORTH ISLAND</b>	<b>Bay of Islands</b>	Copthorne Bay of Islands
	<b>Auckland</b>	Sky City Hotel Rendezvous Hotel Auckland
	<b>Rotorua</b>	Millennium Rotorua Novotel Rotorua Lakeside
	<b>Coromandel</b>	Pacific Harbour Lodge
	<b>Taupo</b>	Millennium Manuels Taupo
	<b>Tauranga</b>	Trinity Wharf Tauranga
	<b>Napier</b>	The Crown Hotel
	<b>National Park</b>	Chateau Tongariro Hotel
	<b>Wellington</b>	Copthorne Hotel Oriental Parade
	<b>Nelson</b>	Rutherford Hotel Nelson
<b>SOUTH ISLAND</b>	<b>Blenheim</b>	Chateau Marlborough
	<b>Greymouth</b>	Kingsgate Hotel Greymouth
	<b>Kaikoura</b>	The White Morph
	<b>Punakaiki</b>	Punakaiki Resort
	<b>Christchurch</b>	Novotel Cathedral Square Rendezvous Hotel
	<b>Mt Cook</b>	Hermitage Hotel
	<b>Queenstown</b>	Millennium Queenstown Novotel Queenstown Lakeside
	<b>Wanaka</b>	Edgewater Resort
	<b>Te Anau</b>	Distinction Te Anau Hotel and Villas
	<b>Dunedin</b>	Scenic Hotel Southern Cross
<b>Glacier Region</b>	Distinction Fox Glacier Hotel	
<b>Invercargill</b>	Ascot Park Hotel	
<b>Stewart Island</b>	Stewart Island Lodge	



Novotel Queenstown



Scenic Hotel Southern Cross, Dunedin



Millennium Queenstown

[Click here to Submit Enquiry](#)

(GT-310517)