

# 2 Days The Straits Hotel & Suites 4\*

Valid From 01 Apr - 30 Jun 2019



| Deluxe                      | Adult  |      |           | Child    |        | Extension |           |            |
|-----------------------------|--------|------|-----------|----------|--------|-----------|-----------|------------|
|                             | Single | Twin | 3rd Adult | With Bed | No Bed | Sgl/Twin  | Extra Bed | Chd B'fast |
| Sun - Thur                  | 145    | 104  | 104       | 95       | 69     | 85        | 40        | 13         |
| Fri & Sat / School Holidays | 155    | 110  | 110       | 99       | 75     | 89        |           |            |
| Peak (01 May / 05, 06 Jun)  | 169    | 120  | 114       | 105      | 79     | 99        |           |            |

| Premier Suite               | Adult  |      |           | Child    |        | Extension |           |            |
|-----------------------------|--------|------|-----------|----------|--------|-----------|-----------|------------|
|                             | Single | Twin | 3rd Adult | With Bed | No Bed | Sgl/Twin  | Extra Bed | Chd B'fast |
| Sun - Thur                  | 175    | 114  | 104       | 95       | 69     | 115       | 40        | 13         |
| Fri & Sat / School Holidays | 185    | 120  | 110       | 99       | 75     | 119       |           |            |
| Peak (01 May / 05, 06 Jun)  | 199    | 134  | 114       | 105      | 79     | 129       |           |            |

School Holidays: 01 - 30 Jun

### Package Include:

Tourcode: MKZFE

- ~ Two way Coach Transfer Singapore - Straits Hotel - Singapore by SVIP 28 - 40 Seater Coach
- ~ One night accommodation at Straits Hotel & Suites Melaka with Breakfast

### Package Exclude:

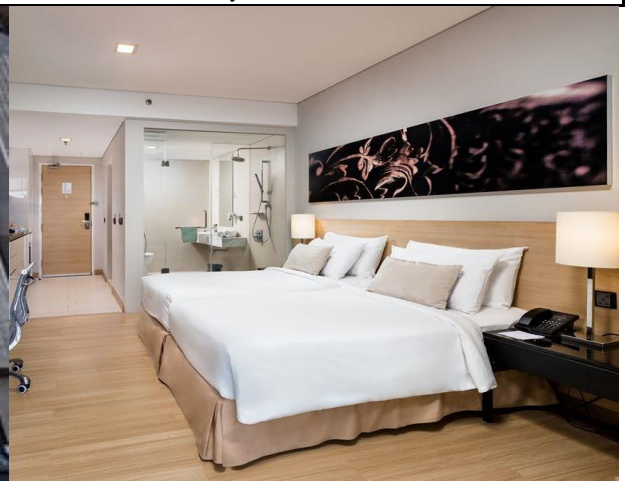
- ~ Tourism Tax: MYR10 per room per night(Pay upon check-in)

### Remark:

- PZ Transfer to 2nd Link as and when necessary
- Coach and Accommodation is subjected to availability

### Optional Coach Insurance @ S\$3.50 Per Person

| Coach Schedule     | Please kindly assemble at Pick up point 15 minutes before departure |  |
|--------------------|---|--|
| Singapore - Melaka | 0700  | Our Tampines Hub Coach Bay                             |
|                    | 0730  | Singapore Flyer WTS Counter # 01-06D                   |
|                    | 0800  | Big Box Main Entrance (Opposite Ng Teng Fong Hospital) |
| Melaka - Singapore | 1445  | Assemble at Straits Hotel & Suites Lobby               |



[Click here to Submit Enquiry](#)

(WTS-29/11/2018)