

2 Days Imperial Heritage 4*

Valid From 01 Apr - 30 Jun 2019



Imperial Deluxe	Adult			Child		Extension		
	Single	Twin	3rd Adult	With Bed	No Bed	Sgl/Twin	Extra Bed	Chd B'fast
Sun - Thur	135	100			69	75		
Fri & Sat / School Holiday	145	104	N/A	N/A	75	79	N/A	13
Peak	169	124			79	99		

Heritage Deluxe	Adult			Child		Extension		
	Single	Twin	3rd Adult	With Bed	No Bed	Sgl/Twin	Extra Bed	Chd B'fast
Sun - Thur	149	104	104	95	69	89		
Fri & Sat / School Holiday	159	110	110	99	75	95	40	13
Peak	189	130	114	105	79	115		

School Holidays: 01 - 30 Jun | Peak: 01 May / 05, 06 Jun

Package Include:

Tourcode: MKZFE

- ~ Two way Coach Transfer Singapore - Hatten Coach Bay - Singapore by SVIP 28 - 40 Seater Coach
- ~ One night accommodation at Imperial Heritage Hotel Melaka with Breakfast

Package Exclude:

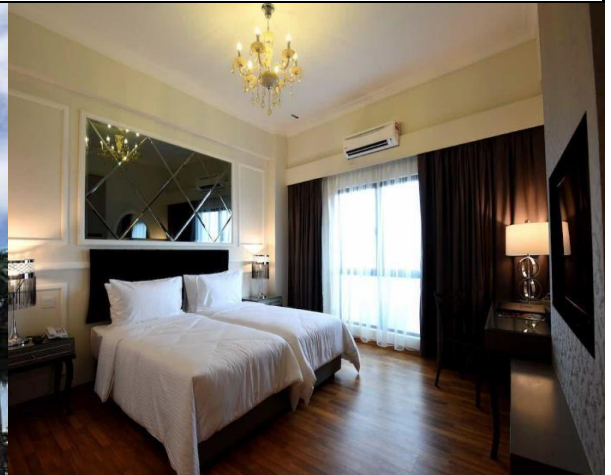
- ~ Tourism Tax: MYR10 per room per night(Pay upon check-in)

Remark:

- PZ Transfer to 2nd Link as and when necessary
- Coach and Accommodation is subjected to availability

Optional Coach insurance @ S\$3.50 Per Adult / Child

Coach Schedule	Please kindly assemble at Pick up point 30 Minutes before departure	
Singapore - Melaka	0700	Our Tampines Hub Coach Bay
	0730	Singapore Flyer WTS Counter # 01-06D
	0800	Big Box Main Entrance Opposite Ng Teng Fong Hospital
Melaka - Singapore	1500	Assemble at Hatten Hotel Coach Bay



[Click here to Submit Enquiry](#)

(WTS-29/11/2018)