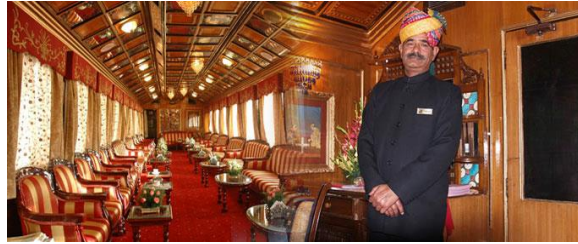
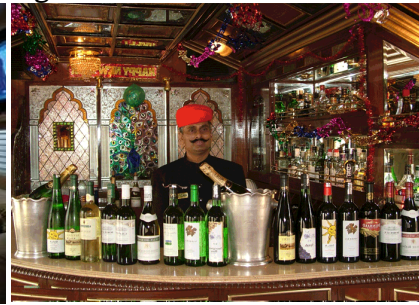


PALACE ON WHEELS

A Purely Royale Experience!



Welcome aboard The Palace on Wheels on its splendid and enchanting royal journey through the bygone era of the erstwhile Maharajas. The name "Palace on Wheels" was derived from its royal back-ground of the coaches. Its 14 Saloons are inter-connected; the interiors of the saloons reflect the aesthetics of the former Royal states of Rajasthan. The exquisite and exclusive Palace on Wheels has luxurious Cabins, wall to wall carpeting, a well stocked bar, two dining cars.



Travel between October 2016 to March 2017 (except departures during X'Mas & New Year):		
Single room	Sharing Twin	Sharing Triple
US\$ 865	US\$ 747	US\$ 661

Travel in September 2016 & April 2017		
Single room	Sharing Twin room	Sharing Triple room
US\$ 747	US\$ 575	US\$ 517

NOTES:

- * **The above given cost is on per person/per night basis.**
- * The Palace on Wheels train operates between September and April every year. It departs on Wednesday from Safdarjung Railway Station and returns the next Wednesday:
October, 2016 - 26
November, 2016 - 2, 9,16,23,30
December, 2016 - 7,14,21,28
January, 2017 - 4,11,18,25
February, 2017 - 1, 8, 15, 22
March, 2017 - 1, 8, 15, 22, 29
April, 2017 - 5,12,19,26
- * The tariff is inclusive of cost of travel, accommodation, all meals, and sightseeing tours, entrance fee (excluding video camera fee) for monuments & palaces and entertainment.
- * Cost does not include liquor, beverages, laundry, video camera charges at monuments, other items of personal nature, pre and post accommodation in Delhi and transfers to / from Delhi railway station.
- * 10% of the tariff for the children up to 5 Years of age.
- * 50% of the prevailing tariff will be charged for the children between 05-12 years of age
- * Full names, ages, nationalities and passport details required.
- * **10% extra surcharge during Christmas and New Year departures.**

Government Service tax of 4.5% will be additional and will be charged extra on the published tariff and a Commercial Tax of US\$ 15 per person, will be charged additional and INR 900 per Pax commercial tax as applicable (for INR tariff only)



Delhi Wednesday- Day 1 Reporting Time: 1600 hrs.

The journey of a lifetime begins at the Delhi Safdarjung Railway station where you are accorded a warm, traditional welcome before the Palace-on-Wheels pulls out into the night for a week-long luxury journey through fascinating Rajasthan.

Departure for Jaipur: 1830 hrs. Dinner on Board.

Jaipur Thursday- Day 2 Arr. 0300 hrs Dep.1930 hrs

The first stop of the Palace-on-Wheels is Jaipur, one of the most well planned cities of the world of its time. This capital city of Rajasthan, popularly known as the Pink City, was founded by Maharaja Sawai Jai Singh II, in 1727 A.D. Visit the Hawa Mahal or the Palace of Winds, which is a remarkable five storied building with semi-octagonal and delicate honey combed sandstone windows. Further visit to Amber Fort where elephant ride is available to climb up the hill. Lunch at a Five Star Hotel followed by visit to City Palace Museum and Observatory. Dinner on board the Palace on Wheels.

Sawai Madhopur and Chittorgarh Friday- Day 3 Arr. 0530 hrs Dep. 2300 hrs

Arrive at Sawai Madhopur, a city named after its founder Maharaja Sawai Madho Singh I. After breakfast a visit is arranged to the Ranthambhore National Park, considered to be the countries best for observing and photographing the activities of the tiger. The park is home to more than 300 species of birds. The tiger, hyena, rate, jackal and fox are among those constituting the carnivorous population here. Sawai Madhopur is known for its exclusive toys, ethnic ornaments and costumes. Return back to the train for lunch. Thereafter proceed for Chittorgarh. Chittorgarh is home to the Chittorgarh Fort the largest fort in India. It is the epitome of Rajput (Indian warrior caste) pride, romance and spirit for people of Chittor who have always chose death before surrendering against anyone. Dinner on board.

Udaipur Saturday- Day 4 Arr. 0800 hrs Dep. 1530 Hrs

One of the most romantic cities in all of Rajasthan, Udaipur is better known as the city of lakes. The marble palaces, the beautiful gardens and the placid blue lakes enhance the beauty of this city. Breakfast on board. The marble palaces viz. Jag Niwas (Lake Palace) and Jag Mandir, appear to rise from the blue waters of Lake Pichhola. After lunch at a 5Star hotel proceed to the City Palace. Dinner on board.

Jaisalmer Sunday- Day 5 Arr. 0915 Hrs. Dep. 2345 Hrs

In the heart of the Thar desert lies Jaisalmer, founded by Rawal Jaisal. Here the yellow sandstone fort is an imposing sight, towering magnificently over the city. The Nathmalji-ki-haveli, Patwon-ki-haveli and Salim Singh-ki-haveli are fine examples of the stone carver's skill. Shop for fine pattu shawls ,mirror work and embroidered articles , wooden boxes , trinkets , silver jewellery and curios. After lunch on board, go for an exciting camel ride on the sand dunes of Sam, before sipping a refreshing cup of tea. Enjoy the dinner and the cultural program at a Five Star hotel.

Jodhpur Monday- Day 6 Arr. 0700 Hrs Dep. 2000 Hrs.

A city ringed by a high stone wall with seven gates and several bastions, Jodhpur the second largest city of Rajasthan, founded by Rao Jodha in1459, is known for its rock-solid Mehrangarh Fort. The grand palaces within - Moti Mahal, Sheesh Mahal, Phool Mahal Sileh Khana and Daulat Khana are impressive examples of architectural excellence. Nearby the fort complex lies Jaswant Thada, a group of royal cenotaphs made of white marble. Breakfast on board, lunch at a Palace Hotel. Shop for exquisite handicraft articles including the famous breeches, embroidered shoes, metal curios, silverware, paintings and tie and dye fabrics. Dinner on board.

Bharatpur and Agra Tuesday- Day 7 Arr. 0500 Hrs Dep Agra 2100 hrs.

Arrive Bharatpur, the capital of Maharaja Suraj Mal. After breakfast, visit the world famous bird sanctuary, Keoladeo Ghana National Park, the nesting place for thousands of Egrets, Siberian Cranes, migratory water Fowl and other species of birds. Thereafter, proceed to Agra. Visit the Agra Fort, followed by Lunch. Then proceed to one of the

most beautiful monuments ever conceived - The Taj Mahal, built by Mughal emperor Shah Jahan in memory of his beloved queen Mumtaz Mahal. Agra is known for its splendid marble inlay work like the Pietra Dura work on the Taj, leather goods and jewellery. Dinner on board.

Delhi Wednesday- Day 8 Arr. 0800 Hrs.

Breakfast on board and return to Safdarjung Railway station.