

Gulangyu Island Half Day Tour

Valid Till : Dec 2018

Duration: 5 hours

Time: 13:00PM - 18:00PM

Take this one day leisure tour of Gulangyu Island. This tour is designed especially for time tourists to Xiamen.



Day 01 Gulangyu Island Tour

Detailed Itinerary: You will be picked up at from your hotel at 1:00PM, you will then be transferred to the ferry terminal by coach. You will then take the ferry to **Gulangyu Island**. Explore the beautiful Gulangyu Island in the afternoon. After the tour you will be transferred to your hotel by ferry or coach at 6:00PM.

Gulangyu Island: One of the most famous destinations of Xiamen. It is renowned for its natural beauty, ancient relics and architecture.

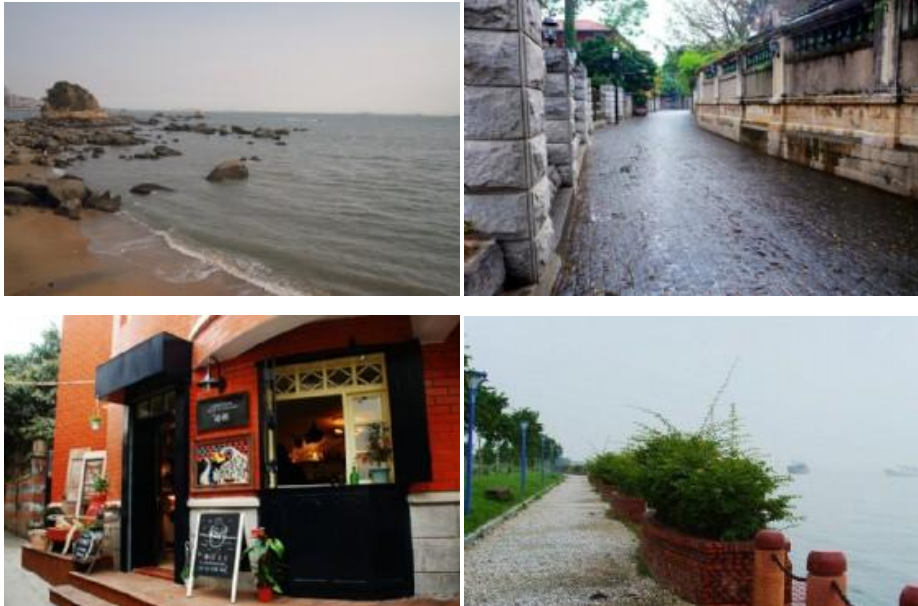
Shuzhuang Garden: It is a tiny garden with style of mixture of Taiwanese and Japanese garden and features snaking paths, koi ponds and hidden zodiac sculptures.

Piano Museum: The museum displays a collection of over 200 pianos from different

nations in the world, some of which are over a century old. When the Treaty of Nanking was ratified in 1842, British forced China to open its door to outside world, Xiamen is a thriving port city once again. More and more Europeans live in Gulangyu. The study of piano proved more popular in 1920's, and some of the country's most skilled musicians came from Gulangyu.

Attractions & Activities:

Meals: No meal



Price per person in USD

Original: Adult-Group Tour- USD 82
Original: Child (3-11yrs)-Group Tour- USD 67

Inclusions

- Entrance Fees to scenic spots as listed in the itinerary
- All land transfers and ferry transportation
- An air-conditioned coach with driver and English-speaking guide

Exclusions

- Accommodations
- Personal Expenses: Expenses of a purely personal nature such as laundry, drinks, fax, telephone calls, optional activities, sightseeing or meals which are not included in the tour itinerary.
- Meals: Any meals which are not specified in the tour itinerary.

