



FLY • CRUISE • CYCLE

6 Days 5 Nights

Penang – Krabi – Phuket Cruise

SuperStar Libra

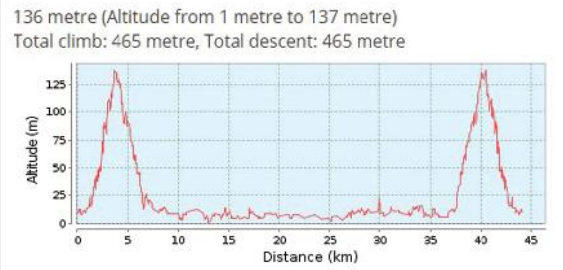
10 – 15 Mar 2017



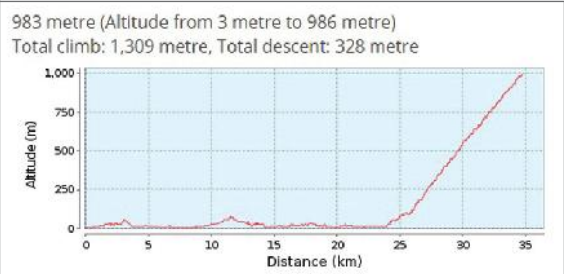
Day	Time	Activities
Fri 10 Mar	8am 10am 11.25am 2pm 6.30pm	Group check-in at Changi Airport Fly from Singapore to Penang via SilkAir (MI348) Arrive Penang and transfer to Olive Tree Hotel 1st Ride: 44km Penang Island (lunch inclusive) Return to hotel for dinner
Sat 11 Mar	7am 8am 10am 5pm	Breakfast at hotel Check-out of hotel and transfer to Mt Jerai 2nd Ride: 35km Mt Jerai (lunch inclusive) Transfer to Royal Bintang Hotel for check-in. Free & easy
Sun 12 Mar	12pm 2.30pm 5pm 6pm	Check-out of hotel Walk to Swettenham Pier for cruise check-in Cruise departs Group dinner at Ocean Palace, Deck 4
Mon 13 Mar	9.15am 10am 4pm 6.45pm 7pm	Roll call at Stardust, Deck 5 3rd Ride: 48km Port > Ao Nang > Free & easy lunch at Ao Nang > Fossil Beach > Crab Statue > Port Return to Krabi Port Group Gala dinner at Four Seasons, Deck 4 Cruise departs
Tue 14 Mar	7am 11.15am 12pm 6pm 11.30pm 1am	Morning workout class at Basketball Court, Deck 6 Roll call at Stardust, Deck 5 4th Ride Group 1: 45km Patong > Karon > Kata > View Point > Chalong Bay > Patong Group 2: 50km Patong > Karon > Kata > View Point > Nai Harn > Rawai > Chalong Bay > Patong Free & easy dinner at Patong Cyclists to return to ship before 11.30pm Cruise departs
Wed 15 Mar	12pm 1pm 3.30pm 6.05pm 7.30pm	Arrive Penang and transfer to Queensbay Mall Free & easy at mall Transfer to airport Fly from Penang to Singapore by SilkAir (MI351) Arrive Singapore

Cycling Routes & Map

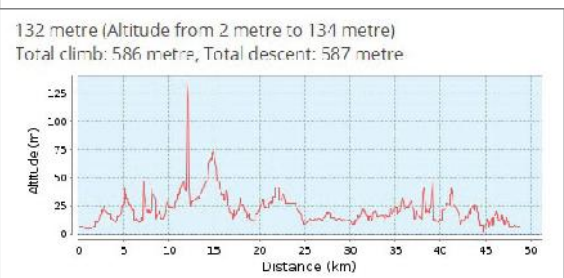
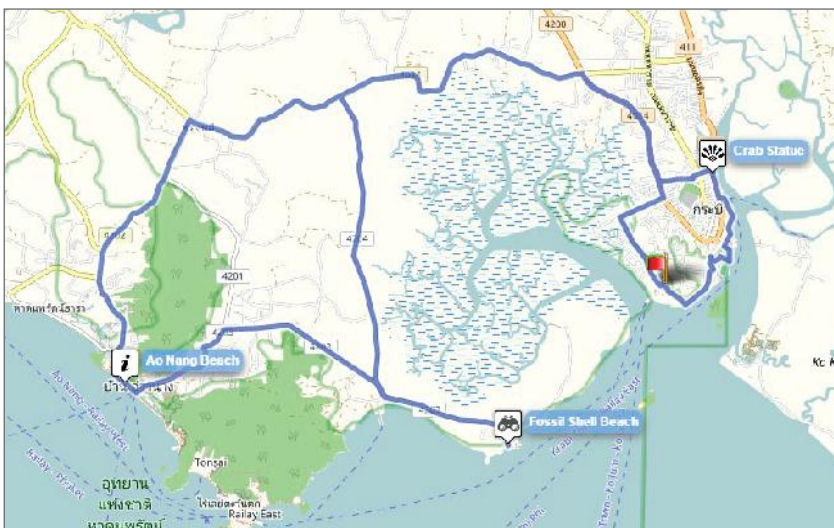
1st Ride: 44km
 10 Mar 2017 (Fri)
 Cycle Route: Penang Island



2nd Ride: 35km
 11 Mar 2017 (Sat)
 Cycling Route: Mt Jerai



3rd Ride: 45km
 13 Mar 2017 (Mon)
 Cycle Route: Port > Ao Nang > Free & easy lunch at Ao Nang > Fossil Beach > Crab Statue > Port

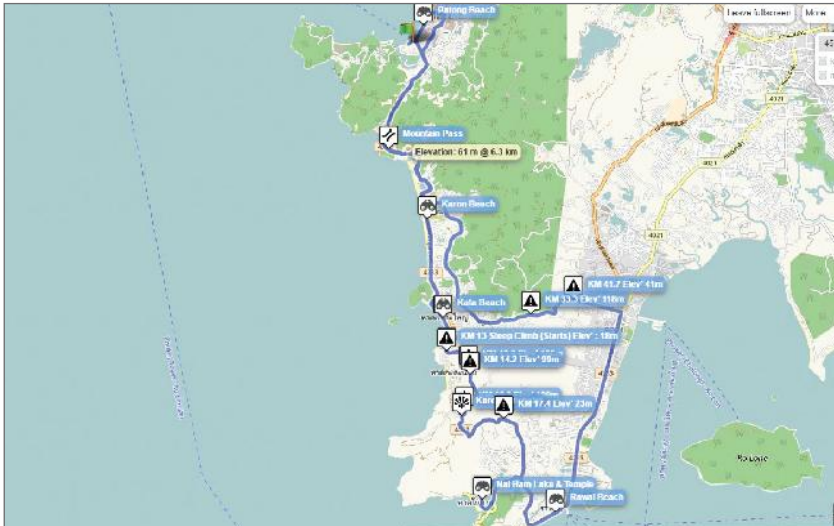


Cycling Routes & Map

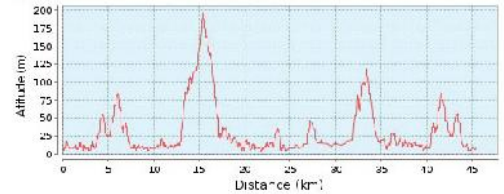
4th Ride: (Group 1 – 45km)

14 Mar 2017 (Tue)

Cycle Route: Patong > Karon > Kata > View Point > Chalong Bay > Patong



193 metre (Altitude from 4 metre to 197 metre)
Total climb: 799 metre, Total descent: 797 metre



4th Ride: (Group 2 – 50km)

14 Mar 2017 (Tue)

Cycling Route: Patong > Karon > Kata > View Point > Nai Harn > Rawai > Chalong Bay > Patong



63 metre (Altitude from 6 metre to 69 metre)
Total climb: 104 metre, Total descent: 109 metre



Land Hotels



Olive Tree Hotel



Royal Bintang Hotel

SuperStar Libra



Deluxe Oceanview Stateroom with Window



Oceanview Stateroom with Window



Inside Stateroom



6 Days 5 Nights Penang – Krabi – Phuket Cruise

Cabin	Early Bird Special (Book by 31 Jan 2017)	Normal Fare (Book from 1 Feb 2017)
Inside Stateroom (I)	\$928	\$999
Oceanview Stateroom with Window (W)	\$1,038	\$1,130
Deluxe Oceanview Stateroom with Window (D)	\$1,078	\$1,180

Above Package Price includes:

- Return SilkAir air tickets
- 1N Standard Room at Royale Bintang Hotel
- 1N Standard Room at Olive Tree Hotel

Optional:

- Mountain bike rental at \$100 for 6 days.
- Please indicate your height below if you are renting a bike.
We will arrange for a suitable bike accordingly.

Note: Package excludes airport tax.

TERMS & CONDITIONS

1. Fares stated are applicable to Singaporeans and Foreigners holding employment pass or Permanent Resident (PR) status in Singapore only.
2. Promotion is subject to cabin availability.
3. Star Cruises reserves the right to cancel or substitute any scheduled port of call at any time and/or for any reason whatsoever without prior notice.
4. If you would like to extend your stay, please indicate your request under the remarks section below. Additional cost applies.
5. All cruises/passages are subject to the Terms and Conditions of Carriage of Star Cruises "(TTC)", and available upon request at Star Cruises office and Star Cruises website www.starcruiises.com
6. No cancellation or amendments are allowed once booking is made.

[Click here to Submit Enquiry](#)

(SSL-141216)